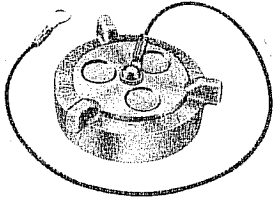


**IMPORTANT:** Our vented caps are designed for use on 1985 and older buses with non-vented fuel tanks.

Our non-vented caps are designed for use on 1986 and newer buses that are equipped with vented fuel tanks.

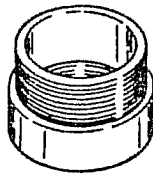
# FUEL SYSTEM PARTS



**FEMALE CAP**

Outside Dia. of Tank Neck.... 2-5/16"  
 Inside Dia. of Cap..... 2-1/4"  
 Threads per inch..... 11-1/2  
 (Includes External Safety Cable)

LK6404 Cap - Non Vented



**FILLER NECK ADAPTER**

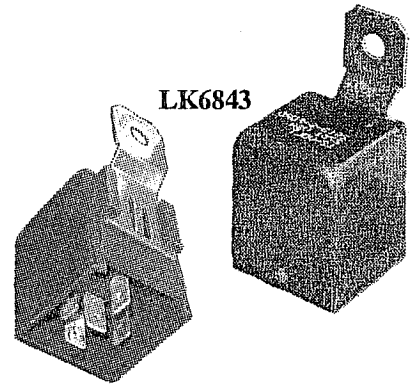
Allows Female Locking Caps LK6415 and LK5873 to fit Filler Necks with small inside diameters.

LK6403 Adapter

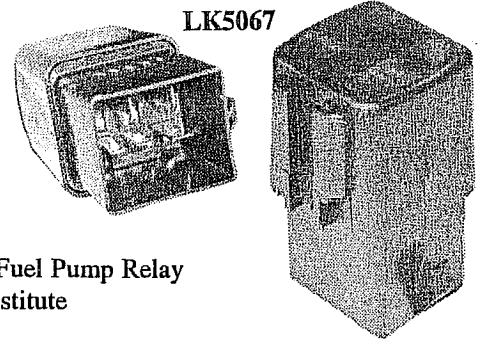
## CONTROL RELAYS FOR ELECTRIC FUEL PUMPS

- JK0504 GM
- JK0518 IH
- JK0522 Ford
- JK0526 Freightliner
- JK0524 Blue Bird
- JK0529 Thomas

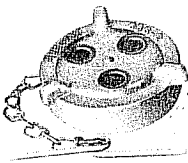
LK5719 How To Replace Ford Fuel Pump Relay With Inexpensive Substitute (For GAS Engines)



LK6843



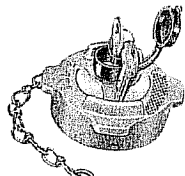
LK5067



**FEMALE CAP**

Outside Dia. of Tank Neck.... 2-5/16"  
 Inside Dia. of Cap..... 2-1/4"  
 Threads per inch..... 11-1/2

LK6402 Cap - Vented  
 LK6407 Cap - Non-Vented



**LOCKING FEMALE CAP**

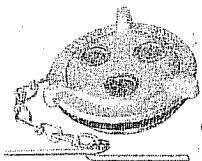
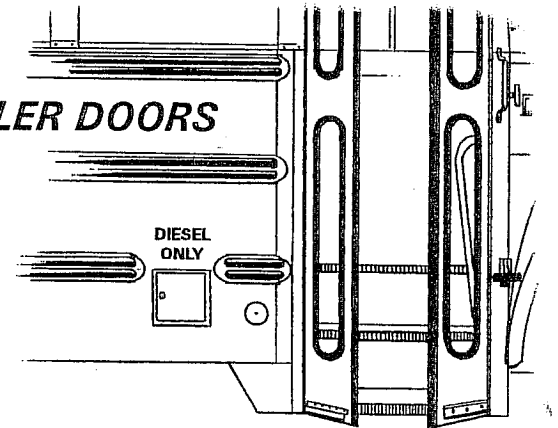
Outside Dia. of Tank Neck.... 2-5/16"  
 Inside Dia. of Cap..... 2-1/4"  
 Threads per inch..... 11-1/2

LK6415 Locking Cap - Vented  
 LK5873 Locking Cap - Non-Vented

## FUEL TANK FILLER DOORS

- LK1162 Blue Bird
- LK1308 Ward / Amtran
- LK2651 Thomas
- LK2652 Carpenter
- LK2653 Wayne

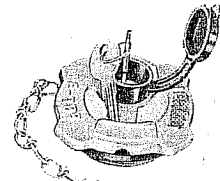
JK0517 Lock For Fuel Filler Door  
 JK0520 Key For Locking Fuel Filler Door



**MALE CAP**

Inside Dia. of Tank Neck..... 2-1/16"  
 Outside Dia. of Cap Threads.. 2-1/8"  
 Threads per inch..... 12

LK6376 Cap - Vented  
 LK6413 Cap - Non-Vented



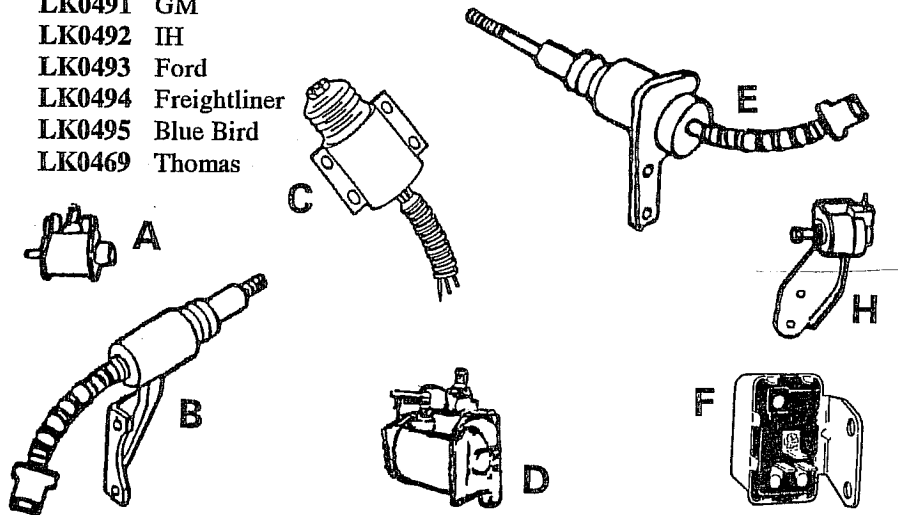
**LOCKING MALE CAP**

Inside Dia. of Tank Neck..... 2-1/16"  
 Outside Dia. of Cap Threads.. 2-1/8"  
 Threads per inch..... 12

LK6414 Locking Cap - Vented

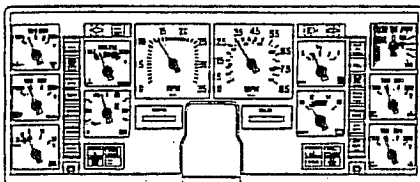
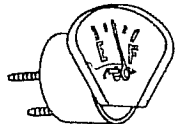
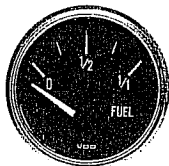
## FUEL SHUT-OFF SOLENOIDS & RELAYS

- LK0491 GM
- LK0492 IH
- LK0493 Ford
- LK0494 Freightliner
- LK0495 Blue Bird
- LK0469 Thomas



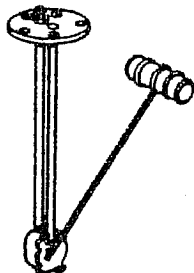
## FUEL GAUGES

- LK4645 Blue Bird TC-2000 / AA
- LK3525 Chevrolet / GMC
- LK4577 Ford
- LK4643 IHC / Navistar
- LK0576 Freightliner



## SENDING UNITS

- LK2970 Blue Bird TC-2000 / AA
- LK2972 Chevrolet / GMC
- LK2973 Ford
- LK2974 IHC / Navistar
- LK2981 Freightliner



## DIESEL FUEL PUMPS

- LK0506 GM
- LK0507 IH
- LK0508 Ford
- LK0509 Freightliner
- LK0510 Blue Bird
- LK0282 Thomas

