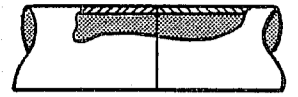


LAP JOINT

CLAMPS & SEALS



BUTT JOINT

PIPE SIZE ↓ ↓	5/16" U-Bolt 13 Gauge Saddle	3/8" U-Bolt 11 Gauge Saddle	3/8" U-Bolt 11 Gauge Saddle	3/8" U-Bolt 11 Gauge Saddle	3/8" U-Bolt	3/8" U-Bolt	3/8" U-Bolt	
1-1/2"	LK6238	-	-	-	-	-	-	-
1-5/8"	LK6239	-	-	-	-	-	-	-
1-3/4"	LK6314	LK6319	-	-	-	-	LK6240	-
1-7/8"	LK6315	LK6320	-	-	-	-	LK6241	-
2"	LK6316	LK6321	-	-	LK6290	LK6247	LK6242	LK6436
2-1/4"	LK6317	LK6322	-	-	LK6291	LK6248	LK6243	-
2-1/2"	LK6318	LK6323	-	-	LK6292	LK6005	LK6244	LK6438
2-3/4"	LK6245	LK6324	-	-	LK6293	-	LK6040	LK6439
3"	LK6246	LK6325	LK6329	LK6273	LK6294	LK6008	LK6301	LK6440
3-1/4"	-	-	LK6330	-	LK6295	-	-	-
3-1/2"	-	LK6326	LK6331	LK6335	LK6296	LK6157	LK6302	LK6441
4"	-	LK6327	LK6332	LK6336	LK6297	LK6074	LK6303	LK6442
4-1/2"	-	-	LK6333	-	LK6299	-	LK6304	-
5"	-	LK6328	LK6334	LK6337	LK6298	-	LK6305	LK6437

PIPE SIZE ↓ ↓	For Lap Joints	For Lap Joints	For Lap Joints	For Butt Joints	Stainless Steel																												
2"	LK6254	LK6264	LK6249	LK6377	<table style="width: 100%; border-collapse: collapse;"> <tr> <td style="width: 80%;">Freightliner - 5.9 Cummins</td> <td>LK8533</td> </tr> <tr> <td>Ford 370 V8 Gas - 1979 & Newer</td> <td>LK6559</td> </tr> <tr> <td>Ford 6-Cyl 6.6 or 7.8 Diesel</td> <td>LK6114</td> </tr> <tr> <td>Ford 8.2T Detroit Turbo-Diesel</td> <td>LK5366</td> </tr> <tr> <td>Ford 8.2N Detroit Non-Turbo</td> <td>LK6085</td> </tr> <tr> <td>Ford 5.9 Cummins Diesel</td> <td>LK5380</td> </tr> <tr> <td>IHC DT-360 or DTA-360 Diesel</td> <td>LK6386</td> </tr> <tr> <td>IHC T-444E Turbo-Diesel</td> <td>LK5391</td> </tr> <tr> <td>IHC DT-466 or DTA-466 Diesel</td> <td>LK6138</td> </tr> <tr> <td>GMC or Chev 6-Cyl Caterpillar</td> <td>LK7679</td> </tr> <tr> <td>GMC or Chev 8.2N Detroit Diesel</td> <td>LK6058</td> </tr> <tr> <td>Blue Bird TC-2000 8.3 Cummins</td> <td>LK6201</td> </tr> <tr> <td>Blue Bird TC-2000 5.9 Cummins</td> <td>LK6385</td> </tr> <tr> <td>Blue Bird Rear Engine Diesel</td> <td>LK2213</td> </tr> </table>	Freightliner - 5.9 Cummins	LK8533	Ford 370 V8 Gas - 1979 & Newer	LK6559	Ford 6-Cyl 6.6 or 7.8 Diesel	LK6114	Ford 8.2T Detroit Turbo-Diesel	LK5366	Ford 8.2N Detroit Non-Turbo	LK6085	Ford 5.9 Cummins Diesel	LK5380	IHC DT-360 or DTA-360 Diesel	LK6386	IHC T-444E Turbo-Diesel	LK5391	IHC DT-466 or DTA-466 Diesel	LK6138	GMC or Chev 6-Cyl Caterpillar	LK7679	GMC or Chev 8.2N Detroit Diesel	LK6058	Blue Bird TC-2000 8.3 Cummins	LK6201	Blue Bird TC-2000 5.9 Cummins	LK6385	Blue Bird Rear Engine Diesel	LK2213
Freightliner - 5.9 Cummins	LK8533																																
Ford 370 V8 Gas - 1979 & Newer	LK6559																																
Ford 6-Cyl 6.6 or 7.8 Diesel	LK6114																																
Ford 8.2T Detroit Turbo-Diesel	LK5366																																
Ford 8.2N Detroit Non-Turbo	LK6085																																
Ford 5.9 Cummins Diesel	LK5380																																
IHC DT-360 or DTA-360 Diesel	LK6386																																
IHC T-444E Turbo-Diesel	LK5391																																
IHC DT-466 or DTA-466 Diesel	LK6138																																
GMC or Chev 6-Cyl Caterpillar	LK7679																																
GMC or Chev 8.2N Detroit Diesel	LK6058																																
Blue Bird TC-2000 8.3 Cummins	LK6201																																
Blue Bird TC-2000 5.9 Cummins	LK6385																																
Blue Bird Rear Engine Diesel	LK2213																																
2-1/4"	LK6255	LK6265	LK6250	LK6378																													
2-1/2"	LK6256	LK6266	LK6006	LK6379																													
2-3/4"	LK6257	LK6267	LK6041	LK6380																													
3"	LK6258	LK6268	LK6009	LK6381																													
3-1/4"	-	-	LK6251	-																													
3-1/2"	LK6259	LK6269	LK6158	LK6382																													
3-3/4"	LK6260	LK6270	LK6252	-																													
4"	LK6261	LK6271	LK6060	LK6383																													
4-1/2"	LK6262	LK6272	LK6253	-																													
5"	LK6263	LK6338	LK6339	LK6384																													